



SWING 46 DESIGN CORNER CHAIR



MEASUREMENTS

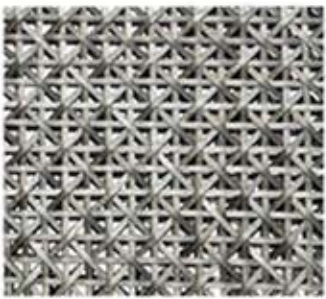
PRODUCT # : MB-S46COR
LENGTH : 36"
WIDTH/DEPTH : 36"
HEIGHT : 25"

MATERIALS

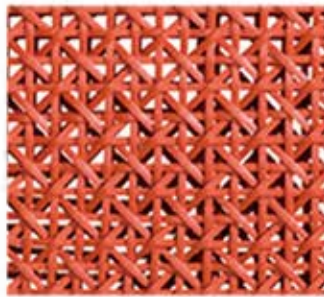
Heavy gauge powder coated aluminum frame.
Quick dry foam
Commercial grade PE resin wicker.

FINISH OPTIONS

WICKER OPTIONS



ED 6003



ED 6004



ED 6001



ED 6002

FABRIC OPTIONS

PLEASE REFER TO THE FABRIC OPTIONS FACT SHEET : <https://babmar.com/p-28241-finish-options.html>

WARRANTY INFORMATION

PLEASE REFER TO OUR WEBSITE : <https://babmar.com/p-28242-warranty.html>